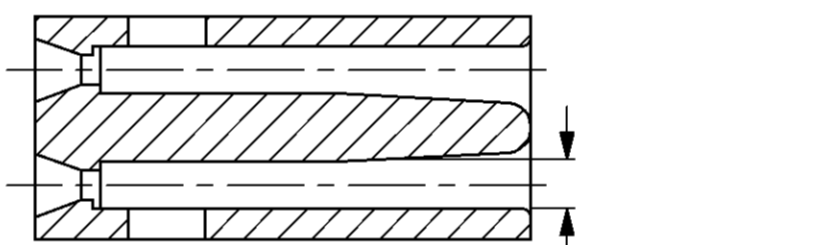
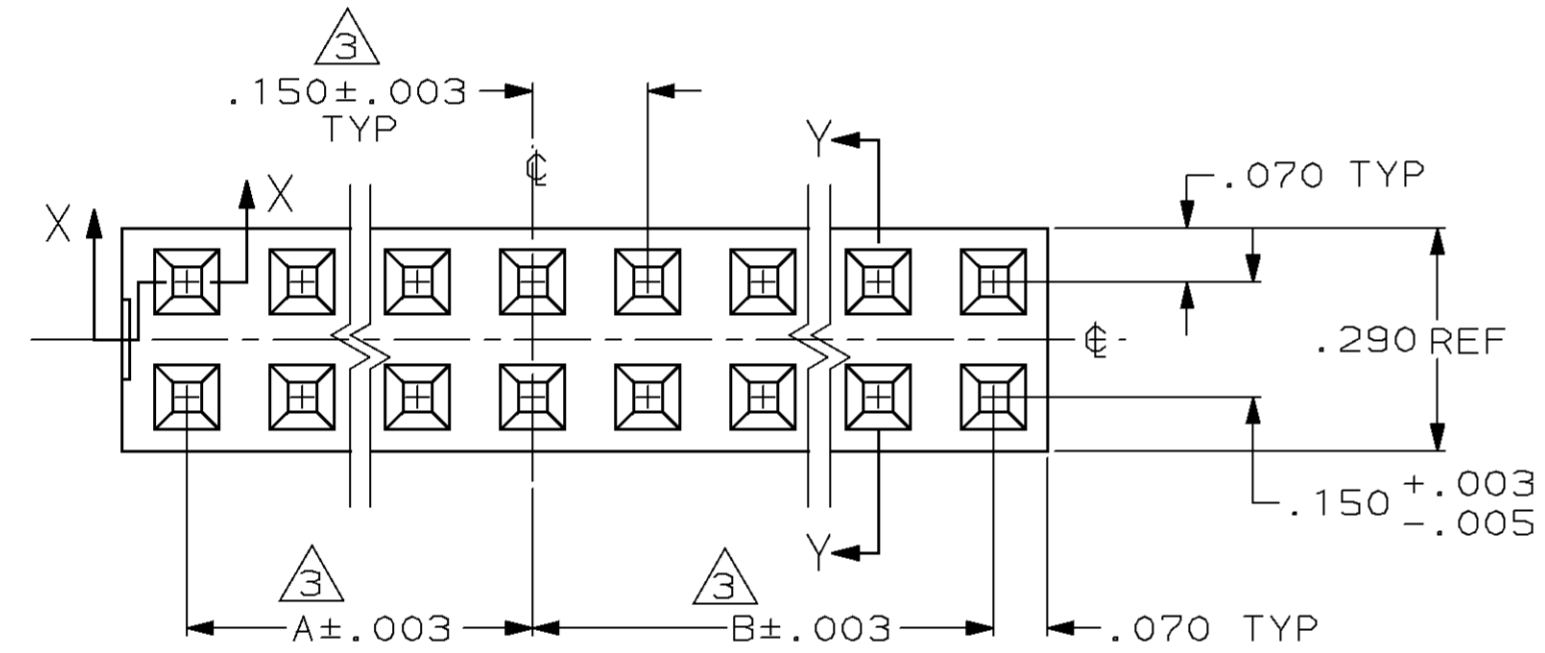
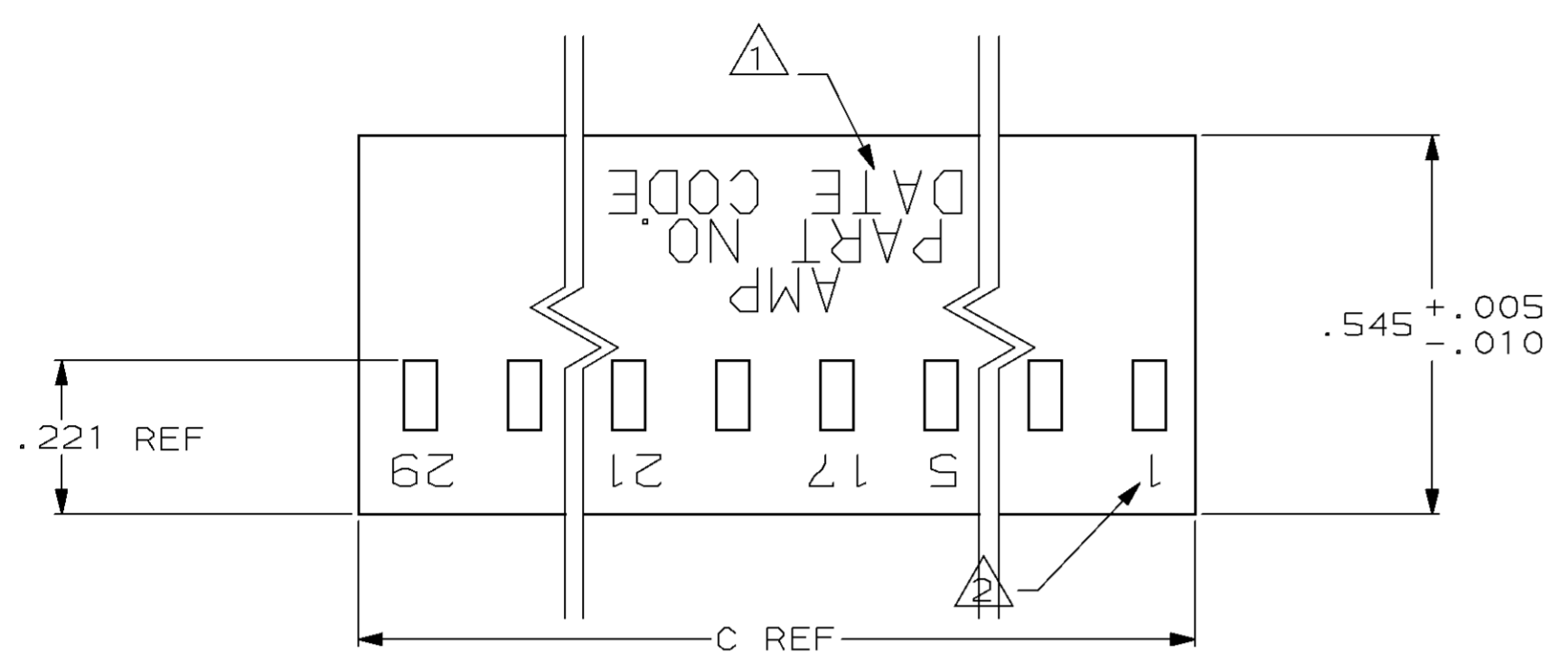
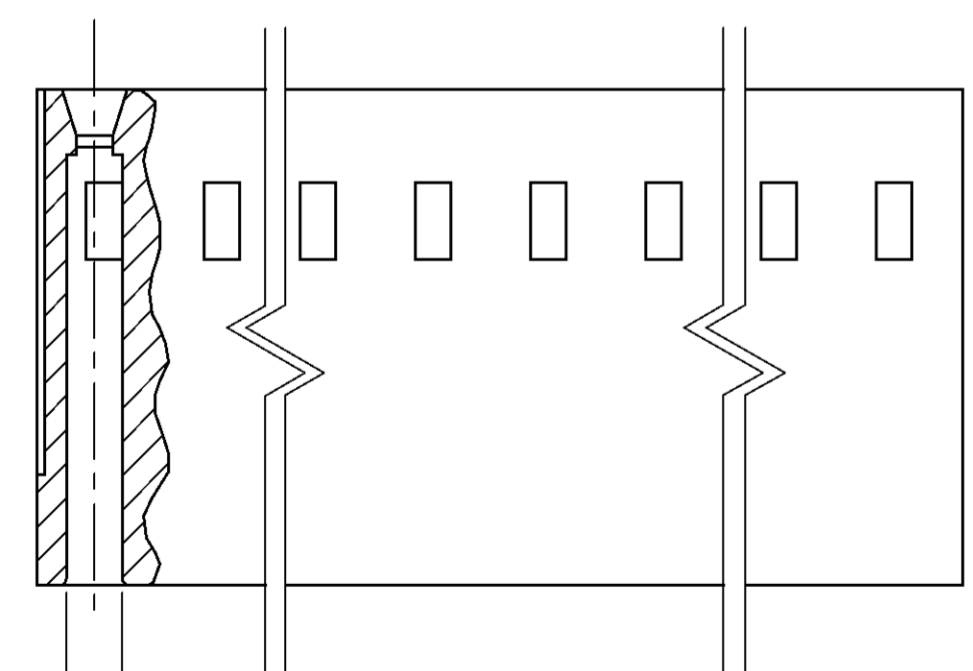


THIS DRAWING IS UNPUBLISHED. RELEASED FOR PUBLICATION  
 © COPYRIGHT 19 BY AMP INCORPORATED. ALL INTERNATIONAL RIGHTS RESERVED.

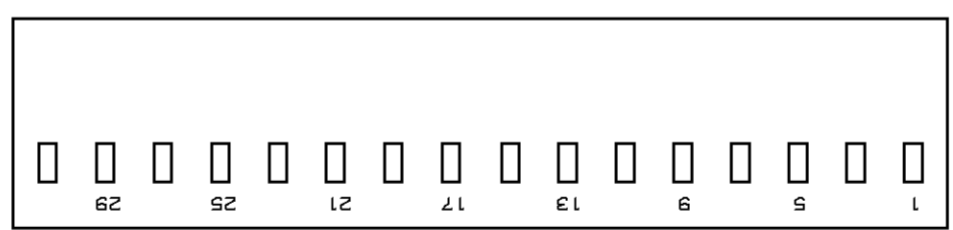
MOD	LOC	DIST	P	F	REVISIONS				
30	AD	39			ZONE	LTR	DESCRIPTION	DATE	APPV
						Y	REV PER 0310-0206-97	6-20-97	BS



SECT Y-Y



SECT X-X



MARKING DETAIL

- ① "AMP" PART NO. & DATE CODE MARKED (WHITE) .062±.015 HIGH CHARS. IN APPROX AREA SHOWN, THIS SIDE, WHEN HOUSING SIZE PERMITS
- ② CAVITY IDENT. MARKED (WHITE) .046±.015 HIGH CHARS. EVERY OTHER CAVITY (AS SHOWN ON MARKING DETAIL).
- ③ TOLERANCE NON-CUMULATIVE.
- 4. USE EXTRACTION TOOL 91052-1 TO REMOVE RECEPTACLE CONTACTS.
- ⑤ SUPERSEDED BY 86263-4.
- ⑥ SUPERSEDED BY 2-86263-3.

OBSOLETE	4.640	2.250	2.250	62	2-86262-7
OBSOLETE	4.190	1.950	2.100	56	2-86262-6
OBSOLETE	4.790	2.250	2.400	64	2-86262-5
OBSOLETE	6.290	3.000	3.150	84	2-86262-4
OBSOLETE	3.740	1.800	1.800	50	2-86262-3
OBSOLETE	6.740	3.300	3.300	90	2-86262-2
OBSOLETE	.590	.150	.300	8	2-86262-0
OBSOLETE	.440	.150	.150	6	1-86262-9
OBSOLETE	.290	-	.150	4	1-86262-8
OBSOLETE	2.990	1.350	1.500	40	1-86262-6
OBSOLETE	2.390	1.050	1.200	32	1-86262-2
OBSOLETE	2.240	1.050	1.050	30	1-86262-1
OBSOLETE	2.090	.900	1.050	28	1-86262-0
OBSOLETE	1.940	.900	.900	26	86262-9
OBSOLETE	1.640	.750	.750	22	86262-7
OBSOLETE	1.490	.600	.750	20	86262-6
	1.340	.600	.600	18	86262-5
OBSOLETE	1.190	.450	.600	16	86262-4
OBSOLETE	1.040	.450	.450	14	86262-3
OBSOLETE	.890	.300	.450	12	86262-2
OBSOLETE	.740	.300	.300	10	86262-1

C	B	A	NO. OF POS.	PART NUMBER
---	---	---	-------------	-------------

DO NOT SCALE PRINT. UNLESS SPECIFIED DIMENSIONS IN INCHES TOLERANCES ON: 2 PLC DEC ± - 3 PLC DEC ± .005 ANGLES ± 0°30'		DR 9-12-89 BOB BOLES	PART NO	
MATERIAL FLAME RETARDANT THERMOLPLASTIC COLOR-BLACK	FINISH -	CHK 10-23-89 J. GESFORD	AMP INCORPORATED Harrisburg, Pa. 17105	
		APPD 10-23-89 J. GESFORD	NAME	
		APPD 10-23-89 FLINCHBAUGH	HOUSING CONNECTOR, CRIMP SNAP-IN, MOD IV, DOUBLE ROW, .150X.150 CENTERS	
		PRODUCT SPEC -	SIZE C	FSCM NO 00779
		APPLICATION SPEC -	DRAWING NO 86262	
		WEIGHT -	SCALE 4:1	SHEET 1 OF 1